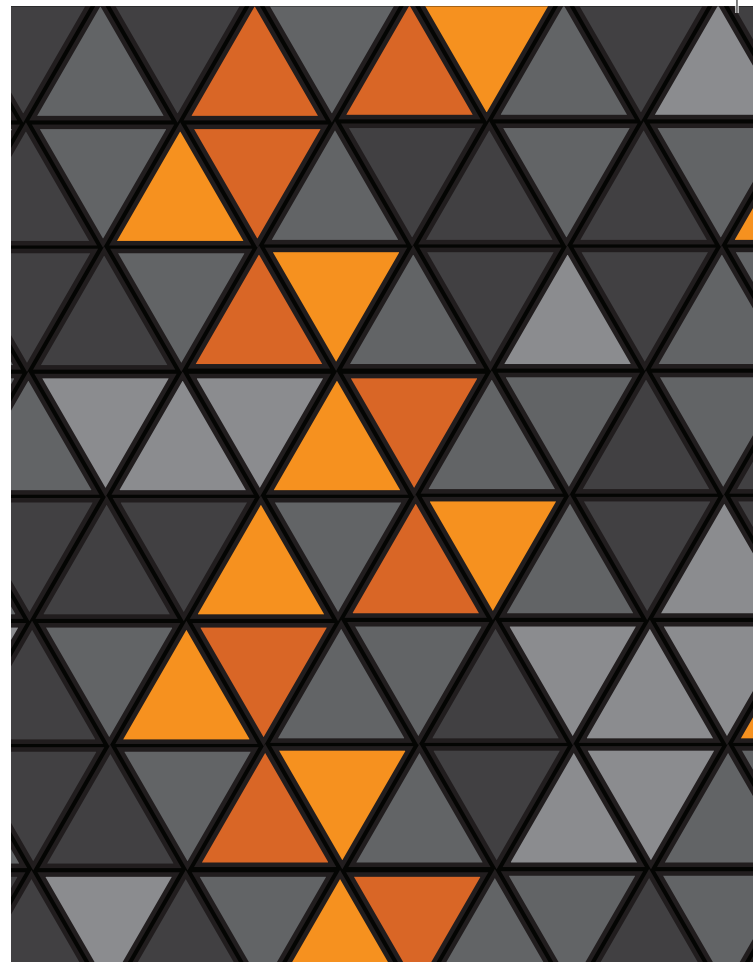


2021 Tax Calendar

www.pwc.co.tz



Email: info@pwc.co.tz • **Website:** www.pwc.co.tz

Dar es Salaam

369 Toure Drive, Oysterbay • P O Box 45 Dar es Salaam, Tanzania
Tel: +255 22 219 2000 • **Fax:** +255 22 219 2200



@PwC_tz



PwC Tanzania



YouTube PwC Africa

Arusha

Fourth Floor, PPF Plaza Corridor Street • P O Box 3070 Arusha, Tanzania
Tel: +255 27 254 8881 • **Fax:** +255 27 250 8166

About PwC

Global

At PwC, our purpose is to build trust in society and solve important problems. We're a network of firms in 155 countries with over 284,000 people who are committed to delivering quality in assurance, advisory and tax services. Find out more and tell us what matters to you by visiting us at www.pwc.com

Africa

In Africa we're the largest provider of professional services with close to 400 partners and over 9,000 people in 34 countries. This means that we're able to provide our clients with seamless and consistent service, wherever they're located on the continent. Our in-depth knowledge and understanding of African operating environments enables us to put ourselves in our clients' shoes to offer tailored Tax, Assurance and Advisory solutions for every business challenge. Realising the appeal of the continent as an investment destination, our dedicated Africa Desk provides assistance to organisations looking to expand their presence in Africa.

Tanzania

The East African firm of Cooper Brothers and Company was formed in 1947 being an amalgamation of two existing firms, the oldest of which first opened offices in Dar es Salaam in 1925. Mergers resulted in changes of name to Coopers & Lybrand (in 1957) and then PricewaterhouseCoopers (PwC) (in 1998). As at December 2020 PwC Tanzania had 8 partners and around 230 staff working from offices in Dar es Salaam and Arusha, including 28 new graduates taken on during 2020. Apart from the training received whilst working with the firm in Tanzania, we also develop our people by deployment on secondment overseas - for example, during 2020 we had 25 Tanzanians working on long term secondments in other PwC offices (Africa, Europe and Middle East).

This year's calendar

In this year's calendar we continue to celebrate the creativity of our people and the beauty of our country and other African countries. We do so by using a selection of photographs taken by our people – for more detail on each photograph and photographer, go to page 17 and 18.

Further information

For more information about our services please contact:

Assurance:

Patrick Kiambi*	Partner - Assurance Leader
Nelson Msuya	Partner - Public Sector Group
Zainab Msimbe	Partner
Cletus Kiyuga	Partner

Tax:

Rishit Shah*	Partner - Tax Leader
Joseph Lyimo	Partner
Mirumbe Mseti	Partner
David Tarimo	Country Senior Partner

Advisory:

Alex Nyaga*	Associate Director (PwC Kenya)
-------------	--------------------------------

*Line of Service Leader

For further information as well as copies of our most recent publications (including an electronic copy of this calendar), please visit www.pwc.co.tz and follow us on Twitter @pwc_tz

Disclaimer

This calendar lists a number of important dates in relation to tax payments and tax filings. It covers corporate and individual income tax, withholding tax, PAYE, SDL, WCF, NSSF, PSSSF, VAT and excise duty. There are a number of other taxes and fees, payable to central or local government, which have not been included. Although we have taken all reasonable care in compiling this calendar, we do not accept responsibility for any errors or inaccuracies contained in the calendar.



Email: info@pwc.co.tz • Website: www.pwc.co.tz

Dar es Salaam

369 Toure Drive, Oysterbay • P O Box 45 Dar es Salaam, Tanzania
Tel: +255 22 219 2000 • Fax: +255 22 219 2200

Arusha

Fourth Floor, PPF Plaza Corridor Street • P O Box 3070 Arusha, Tanzania
Tel: +255 27 254 8881 • Fax: +255 27 250 8166



@PwC_tz



PwC Tanzania



YouTube PwC Africa

Our Services

Assurance services including:

- Financial Statements Audit
- Corporate Reporting
- IFRS Reporting and Training
- Regulatory Compliance
- Capital Markets transaction support
- Corporate Treasury Solutions
- Accounting Advisory
- Risk Assurance: independent controls & systems process assurance
 - Internal audit services
 - Business control advisory
 - Business resilience, IT risk assurance
- Sustainability Reporting

Tax services including:

- Human Resource Services (including International Assignee Services)
- Indirect Taxes (including VAT, Customs and Excise)
- International Tax Services
- Tax Reporting & Strategy (including Tax Strategy & Operations, Tax Technology, Tax Accounting Services and Tax Reporting & Compliance)
- Tax Controversy and Dispute Resolution
- Transactions (Mergers and Acquisitions)
- Transfer Pricing
- Tax Health Checks
- Tax Training

Advisory services including:

- Deals / Transactions / Public Private Partnerships (“PPPs”)
- Business Recovery Services
- Forensics
- Consulting:
 - Finance & Accounting (including treasury/finance and cash management; operational finance)
 - People & Organisation (including HR management (talent management and workforce planning; HR measurement, benchmarking and analytics; HR function effectiveness & transformation; HR transaction services) and Reward (advice on compensation and benefits));
 - Strategy & Operations
 - Technology (including IT programme and project management, IT function transformation, IT sourcing, IT architecture)
 - Procurement Agency Services



Email: info@pwc.co.tz • Website: www.pwc.co.tz

Dar es Salaam

369 Toure Drive, Oysterbay • P O Box 45 Dar es Salaam, Tanzania
Tel: +255 22 219 2000 • Fax: +255 22 219 2200

Arusha

Fourth Floor, PPF Plaza Corridor Street • P O Box 3070 Arusha, Tanzania
Tel: +255 27 254 8881 • Fax: +255 27 250 8166



@PwC_tz



PwC Tanzania



YouTube PwC Africa

Tanzania Tax Data 2020/2021

Income Tax

Corporation rate	Income (Profit) %	Turnover %
Income tax rate (normal) / alternative minimum tax (AMT)	30	0.5
Technical and management services to extractive sector		5
Individual rate - monthly (Mainland Tanzania)		Income %
30% on monthly income > TZS 1million, and lower rates below that.		0, 9, 20, 25, 30
Tax on 1st TZS 1 million per month is TZS 130,500		
Withholding Tax	Resident %	Non-Resident %
Dividend; Interest; Rent	0, 10	10
Dividend: (i) from listed entity, or (ii) to resident corporate controlling 25% or more	5	5
Service Fee	5	15
Director Fee (other than full time service); Natural Resource Payment; Royalty	15	15
General insurance premium	0	5
Commission etc to agent (commercial bank, digital payment, money transfer)	10	n/a
Payment for goods by Government institutions	2	n/a

For our detailed tax datacard and other tax insights, do refer to www.pwc.co.tz

Note: the tax rates shown cover the period 1 July 2020 to 30 June 2021; these rates may change from 1 July 2021 (following the Budget reading).

Payroll Taxes

	%
PAYE (employee)	Income tax rate
NSSF, PSSSF - up to half (10%) deductible from employee	20
Skills and Development Levy	4
Workers Compensation Fund (private sector / public sector)	1/0.5

Indirect Taxes

Customs Duty [also note 1.5% Railway Development Levy]	%
Capital goods, raw materials, agricultural inputs, pure-bred breeding animals	0
Semi-finished goods	10
Finished consumer goods	25
Excise Duty	
Goods - including alcohol and tobacco products, soft drinks, petroleum products, specified imports	Various
Services - satellite & cable TV, financial & money transfer / withdrawal, electronic communication	5, 10, 17
VAT	
Supply of / import of goods & services	18
Export of goods & certain services	0
Service Levy - charged on turnover	0.3% (maximum)
Stamp Duty	
Conveyance / transfer, share / debenture transfer, lease agreement	1
Other instruments	Various



Email: info@pwc.co.tz • Website: www.pwc.co.tz

Dar es Salaam

369 Toure Drive, Oysterbay • P O Box 45 Dar es Salaam, Tanzania
Tel: +255 22 219 2000 • Fax: +255 22 219 2200

Arusha

Fourth Floor, PPF Plaza Corridor Street • P O Box 3070 Arusha, Tanzania
Tel: +255 27 254 8881 • Fax: +255 27 250 8166



@PwC_tz



PwC Tanzania



PwC Africa

2021

JANUARY



February 2021

Mon	Tue	Wed	Thur	Fri	Sat	Sun
1	2	3	4	5	6	7
8	9	10	11	12	13	14
15	16	17	18	19	20	21
22	23	24	25	26	27	28

07

Filing - SDL return for December 2020

Payment - Withholding tax, PAYE and SDL for December 2020

20

Filing - VAT return for December 2020

Payment - VAT for December 2020

29

Filing - Withholding tax, PAYE and SDL for July to December 2020

Filing - Excise Duty and WCF returns for December 2020

Payment - Excise Duty, NSSF/ PSSSF and WCF for December 2020

Mon	Tue	Wed	Thu	Fri	Sat	Sun	Mon	Tue	Wed	Thu	Fri	Sat	Sun
				1 New Year's Day	2	3	4	5	6	7	8	9	10
11	12 Zanzibar Revolution Day	13	14	15	16	17	18	19	20	21	22	23	24
25	26	27	28	29	30	31							



Email: info@pwc.co.tz • Website: www.pwc.co.tz

Dar es Salaam

369 Toure Drive, Oysterbay • P O Box 45 Dar es Salaam, Tanzania
Tel: +255 22 219 2000 • Fax: +255 22 219 2200

Arusha

Fourth Floor, PPF Plaza Corridor Street • P O Box 3070 Arusha, Tanzania
Tel: +255 27 254 8881 • Fax: +255 27 250 8166



@PwC_tz



PwC Tanzania



PwC Africa

2021

FEBRUARY



March 2021

Mon	Tue	Wed	Thur	Fri	Sat	Sun
1	2	3	4	5	6	7
8	9	10	11	12	13	14
15	16	17	18	19	20	21
22	23	24	25	26	27	28
29	30	31				

Mon	Tue	Wed	Thu	Fri	Sat	Sun	Mon	Tue	Wed	Thu	Fri	Sat	Sun
1	2	3	4	5	6	7	8	9	10	11	12	13	14
15	16	17	18	19	20	21	22	23	24	25	26	27	28

08

Filing - SDL return for January 2021

Payment - Withholding tax, PAYE, SDL for January 2021

22

Filing - VAT return for January 2021

Payment - VAT for January 2021

26

Filing - Excise Duty and WCF returns for January 2021

Payment - Excise Duty, NSSF/ PSSSF and WCF for January 2021



Email: info@pwc.co.tz • Website: www.pwc.co.tz

Dar es Salaam

369 Toure Drive, Oysterbay • P O Box 45 Dar es Salaam, Tanzania
Tel: +255 22 219 2000 • Fax: +255 22 219 2200

Arusha

Fourth Floor, PPF Plaza Corridor Street • P O Box 3070 Arusha, Tanzania
Tel: +255 27 254 8881 • Fax: +255 27 250 8166



@PwC_tz



PwC Tanzania



PwC Africa

2021

MARCH



Mon	Tue	Wed	Thu	Fri	Sat	Sun	Mon	Tue	Wed	Thu	Fri	Sat	Sun
1	2	3	4	5	6	7	8	9	10	11	12	13	14
15	16	17	18	19	20	21	22	23	24	25	26	27	28
29	30	31											

April 2021

Mon	Tue	Wed	Thur	Fri	Sat	Sun
			1	2	3	4
5	6	7	8	9	10	11
12	13	14	15	16	17	18
19	20	21	22	23	24	25
26	27	28	29	30		

08

Filing - SDL return for February 2021
Payment - Withholding tax, PAYE, SDL for February 2021

22

Filing - VAT return for February 2021
Payment - VAT for February 2021

Filing - Excise Duty and WCF returns for February 2021

Payment - Excise Duty, NSSF/PSSSF and WCF for February 2021, City Service Levy for January to March 2021

31

Filing - Income Tax (year end): Sept 2020 (final return), March 2021 (instalment tax amendment), December 2021 (instalment tax return)

Payment - Income Tax (year-end) Sept 2020 (final tax), March 2021 (4th instalment), June 2021 (3rd instalment), Sept 2021 (2nd instalment), Dec 2021 (1st instalment)



Email: info@pwc.co.tz • Website: www.pwc.co.tz

Dar es Salaam

369 Toure Drive, Oysterbay • P O Box 45 Dar es Salaam, Tanzania
 Tel: +255 22 219 2000 • Fax: +255 22 219 2200

Arusha

Fourth Floor, PPF Plaza Corridor Street • P O Box 3070 Arusha, Tanzania
 Tel: +255 27 254 8881 • Fax: +255 27 250 8166



@PwC_tz



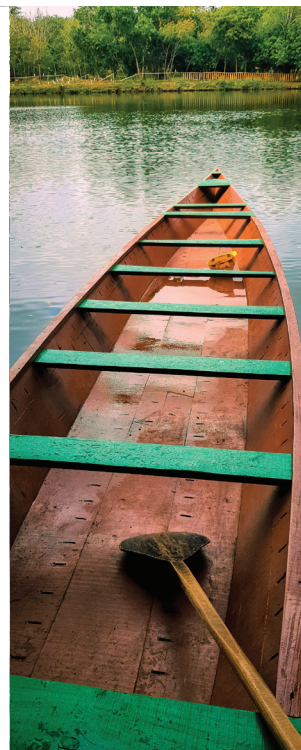
PwC Tanzania



PwC Africa

2021

APRIL



May 2021

Mon	Tue	Wed	Thur	Fri	Sat	Sun
31					1	2
3	4	5	6	7	8	9
10	11	12	13	14	15	16
17	18	19	20	21	22	23
24	25	26	27	28	29	30

Mon	Tue	Wed	Thu	Fri	Sat	Sun	Mon	Tue	Wed	Thu	Fri	Sat	Sun
			1	2 Good Friday	3	4 Easter Sunday	5 Easter Monday	6	7 Karume Day	8	9	10	11
12	13	14	15	16	17	18	19	20	21	22	23	24	25
26 Union Day	27	28	29	30									

08

Filing - SDL return for March 2021
Payment - Withholding tax, PAYE, SDL for March 2021

20

Filing - VAT return for March 2021
Payment - VAT for March 2021

30

Filing - Excise Duty and WCF returns for March 2021
Payment - Excise Duty, NSSF/ PSSSF and WCF for March 2021



Email: info@pwc.co.tz • Website: www.pwc.co.tz

Dar es Salaam

369 Toure Drive, Oysterbay • P O Box 45 Dar es Salaam, Tanzania
Tel: +255 22 219 2000 • Fax: +255 22 219 2200

Arusha

Fourth Floor, PPF Plaza Corridor Street • P O Box 3070 Arusha, Tanzania
Tel: +255 27 254 8881 • Fax: +255 27 250 8166



@PwC_tz



PwC Tanzania



PwC Africa

2021

MAY



Mon	Tue	Wed	Thu	Fri	Sat	Sun	Mon	Tue	Wed	Thu	Fri	Sat	Sun
					1	2	3	4	5	6	7	8	9
10	11	12	13	14	15	16	17	18	19	20	21	22	23
24	25	26	27	28	29	30	31						

Worker's Day

Eid El Fitri*

Eid El Fitri*

*Two day holiday; subject to sighting of the moon

June 2021

Mon	Tue	Wed	Thur	Fri	Sat	Sun
	1	2	3	4	5	6
7	8	9	10	11	12	13
14	15	16	17	18	19	20
21	22	23	24	25	26	27
28	29	30				

07

Filing - SDL return for April 2021
Payment - Withholding tax, PAYE, SDL for April 2021

20

Filing - VAT return for April 2021
Payment - VAT for April 2021

31

Filing - Excise Duty and WCF returns for April 2021
Payment - Excise Duty, NSSF/ PSSSF and WCF for April 2021



Email: info@pwc.co.tz • Website: www.pwc.co.tz

Dar es Salaam

369 Toure Drive, Oysterbay • P O Box 45 Dar es Salaam, Tanzania
 Tel: +255 22 219 2000 • Fax: +255 22 219 2200

Arusha

Fourth Floor, PPF Plaza Corridor Street • P O Box 3070 Arusha, Tanzania
 Tel: +255 27 254 8881 • Fax: +255 27 250 8166



@PwC_tz



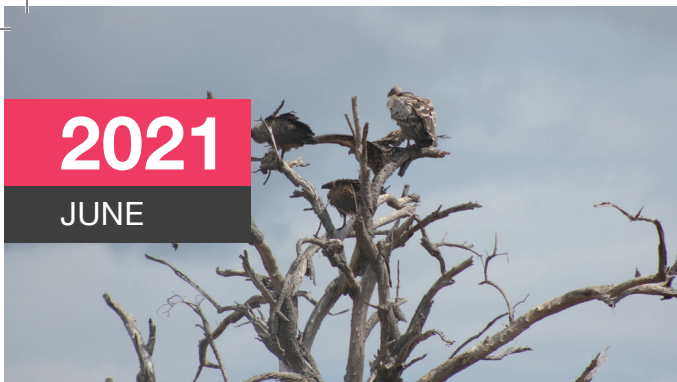
PwC Tanzania



PwC Africa

2021

JUNE



July 2021

Mon	Tue	Wed	Thur	Fri	Sat	Sun
			1	2	3	4
5	6	7	8	9	10	11
12	13	14	15	16	17	18
19	20	21	22	23	24	25
26	27	28	29	30	31	

07

Filing - SDL return for May 2021
Payment - Withholding tax, PAYE, SDL for May 2021

21

Filing - VAT return for May 2021
Payment - VAT for May 2021

30

Filing - Excise Duty and WCF returns for May 2021

Payment - Excise Duty, NSSF/ PSSSF and WCF for May 2021, City Service Levy for April to June 2021

Filing - Income Tax (year end): December 2020 (final return), June 2021 (instalment tax amendment), March 2022 (instalment tax return)

Payment - Income Tax (year-end) December 2020 (final tax), June 2021 (4th instalment), September 2021 (3rd instalment), December 2021 (2nd instalment), March 2022 (1st instalment)

Mon	Tue	Wed	Thu	Fri	Sat	Sun	Mon	Tue	Wed	Thu	Fri	Sat	Sun
	1	2	3	4	5	6	7	8	9	10 <small>Likely date for budget reading</small>	11	12	13
14	15	16	17	18	19	20	21	22	23	24	25	26	27
28	29	30											



Email: info@pwc.co.tz • Website: www.pwc.co.tz

Dar es Salaam

369 Toure Drive, Oysterbay • P O Box 45 Dar es Salaam, Tanzania
 Tel: +255 22 219 2000 • Fax: +255 22 219 2200

Arusha

Fourth Floor, PPF Plaza Corridor Street • P O Box 3070 Arusha, Tanzania
 Tel: +255 27 254 8881 • Fax: +255 27 250 8166



@PwC_tz



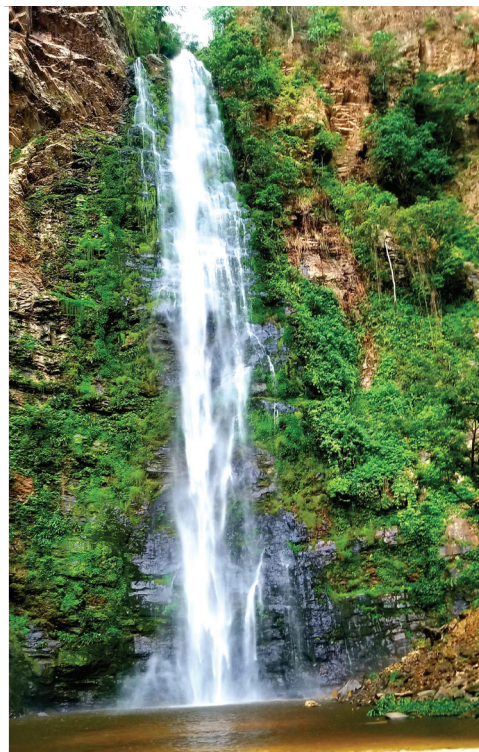
PwC Tanzania



PwC Africa

2021

JULY



August 2021

Mon	Tue	Wed	Thur	Fri	Sat	Sun
						1
2	3	4	5	6	7	8
9	10	11	12	13	14	15
16	17	18	19	20	21	22
23	24	25	26	27	28	29
30	31					

Mon	Tue	Wed	Thu	Fri	Sat	Sun	Mon	Tue	Wed	Thu	Fri	Sat	Sun
			1 <small>Likely effective date for Finance Act</small>	2	3	4	5	6	7 <small>Saba Saba Day</small>	8	9	10	11
12	13	14	15	16	17	18	19	20	21 <small>Eid El Hajj*</small>	22	23	24	25
26	27	28	29	30	31								

*Subject to sighting of the moon

08

Filing - SDL return for June 2021
Payment - Withholding tax, PAYE, SDL for June 2021

20

Filing - VAT return for June 2021
Payment - VAT for June 2021

30

Filing - Withholding tax, PAYE and SDL for January to June 2021
Filing - Excise Duty and WCF returns for June 2021
Payment - Excise Duty, NSSF/ PSSSF and WCF for June 2021



Email: info@pwc.co.tz • Website: www.pwc.co.tz

Dar es Salaam

369 Toure Drive, Oysterbay • P O Box 45 Dar es Salaam, Tanzania
Tel: +255 22 219 2000 • Fax: +255 22 219 2200

Arusha

Fourth Floor, PPF Plaza Corridor Street • P O Box 3070 Arusha, Tanzania
Tel: +255 27 254 8881 • Fax: +255 27 250 8166



@PwC_tz



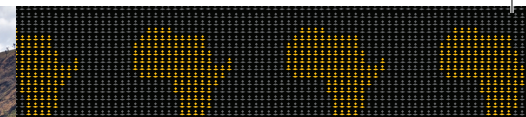
PwC Tanzania



PwC Africa

2021

AUGUST



September 2021

Mon	Tue	Wed	Thur	Fri	Sat	Sun
		1	2	3	4	5
6	7	8	9	10	11	12
13	14	15	16	17	18	19
20	21	22	23	24	25	26
27	28	29	30			

Mon	Tue	Wed	Thu	Fri	Sat	Sun	Mon	Tue	Wed	Thu	Fri	Sat	Sun
						1	2	3	4	5	6	7	8
9	10	11	12	13	14	15	16	17	18	19	20	21	22
23	24	25	26	27	28	29	30	31					

Nane Nane Day

09

Filing - SDL return for July 2021
Payment - Withholding tax, PAYE, SDL for July 2021

20

Filing - VAT return for July 2021
Payment - VAT for July 2021

31

Filing - Excise Duty and WCF returns for July 2021
Payment - Excise Duty, NSSF/ PSSSF and WCF July 2021



Email: info@pwc.co.tz • Website: www.pwc.co.tz

Dar es Salaam

369 Toure Drive, Oysterbay • P O Box 45 Dar es Salaam, Tanzania
Tel: +255 22 219 2000 • Fax: +255 22 219 2200

Arusha

Fourth Floor, PPF Plaza Corridor Street • P O Box 3070 Arusha, Tanzania
Tel: +255 27 254 8881 • Fax: +255 27 250 8166



@PwC_tz



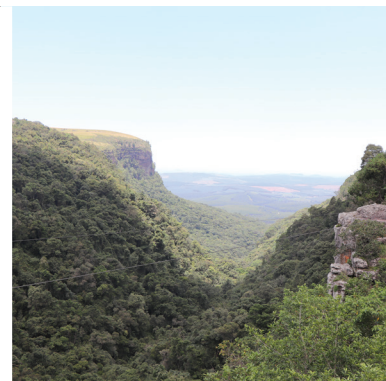
PwC Tanzania



PwC Africa

2021

SEPTEMBER



October 2021

Mon	Tue	Wed	Thur	Fri	Sat	Sun
				1	2	3
4	5	6	7	8	9	10
11	12	13	14	15	16	17
18	19	20	21	22	23	24
25	26	27	28	29	30	31

07

Filing - SDL return for August 2021
Payment - Withholding tax, PAYE, SDL for August 2021

20

Filing - VAT return for August 2021
Payment - VAT for August 2021

Filing - Excise Duty and WCF returns for August 2021

Payment - Excise Duty, NSSF/ PSSSF and WCF for August 2021, City Service Levy for July to September 2021

30

Filing - Income Tax (year end): March 2021 (final return), September 2021 (instalment tax amendment), June 2022 (instalment tax return)

Payment - Income Tax (year-end) March 2021 (final tax), September 2021 (4th instalment), December 2021 (3rd instalment), March 2022 (2nd instalment), June 2022 (1st instalment)

Mon	Tue	Wed	Thu	Fri	Sat	Sun	Mon	Tue	Wed	Thu	Fri	Sat	Sun
		1	2	3	4	5	6	7	8	9	10	11	12
13	14	15	16	17	18	19	20	21	22	23	24	25	26
27	28	29	30										



Email: info@pwc.co.tz • Website: www.pwc.co.tz

Dar es Salaam

369 Toure Drive, Oysterbay • P O Box 45 Dar es Salaam, Tanzania
 Tel: +255 22 219 2000 • Fax: +255 22 219 2200

Arusha

Fourth Floor, PPF Plaza Corridor Street • P O Box 3070 Arusha, Tanzania
 Tel: +255 27 254 8881 • Fax: +255 27 250 8166



@PwC_tz



PwC Tanzania



PwC Africa

2021

OCTOBER



November 2021

Mon	Tue	Wed	Thur	Fri	Sat	Sun
1	2	3	4	5	6	7
8	9	10	11	12	13	14
15	16	17	18	19	20	21
22	23	24	25	26	27	28
29	30					

Mon	Tue	Wed	Thu	Fri	Sat	Sun	Mon	Tue	Wed	Thu	Fri	Sat	Sun
				1	2	3	4	5	6	7	8	9	10
11	12	13	14 Nyerere Day	15	16	17	18	19 Maulid Day*	20	21	22	23	24
25	26	27	28	29	30	31							

*Subject to sighting of the moon

07

Filing - SDL return for September 2021

Payment - Withholding tax, PAYE, SDL for September 2021

20

Filing - VAT return for September 2021

Payment - VAT for September 2021

29

Filing - Excise Duty and WCF returns for September 2021

Payment - Excise Duty, NSSF/ PSSSF and WCF for September 2021



Email: info@pwc.co.tz • Website: www.pwc.co.tz

Dar es Salaam

369 Toure Drive, Oysterbay • P O Box 45 Dar es Salaam, Tanzania
Tel: +255 22 219 2000 • Fax: +255 22 219 2200

Arusha

Fourth Floor, PPF Plaza Corridor Street • P O Box 3070 Arusha, Tanzania
Tel: +255 27 254 8881 • Fax: +255 27 250 8166



@PwC_tz



PwC Tanzania



PwC Africa

2021

NOVEMBER



December 2021

Mon	Tue	Wed	Thur	Fri	Sat	Sun
		1	2	3	4	5
6	7	8	9	10	11	12
13	14	15	16	17	18	19
20	21	22	23	24	25	26
27	28	29	30	31		

Mon	Tue	Wed	Thu	Fri	Sat	Sun	Mon	Tue	Wed	Thu	Fri	Sat	Sun
1	2	3	4	5	6	7	8	9	10	11	12	13	14
15	16	17	18	19	20	21	22	23	24	25	26	27	28
29	30												

08

Filing - SDL return for October 2021
Payment - Withholding tax, PAYE, SDL for October 2021

22

Filing - VAT return for October 2021
Payment - VAT for October 2021

30

Filing - Excise Duty and WCF returns for October 2021
Payment - Excise Duty, NSSF/ PSSSF and WCF for October 2021



Email: info@pwc.co.tz • Website: www.pwc.co.tz

Dar es Salaam

369 Toure Drive, Oysterbay • P O Box 45 Dar es Salaam, Tanzania
 Tel: +255 22 219 2000 • Fax: +255 22 219 2200

Arusha

Fourth Floor, PPF Plaza Corridor Street • P O Box 3070 Arusha, Tanzania
 Tel: +255 27 254 8881 • Fax: +255 27 250 8166



@PwC_tz



PwC Tanzania



PwC Africa

2021

DECEMBER



Mon	Tue	Wed	Thu	Fri	Sat	Sun	Mon	Tue	Wed	Thu	Fri	Sat	Sun
		1	2	3	4	5	6	7	8	9	10	11	12
13	14	15	16	17	18	19	20	21	22	23	24	25	26
27	28	29	30	31									

Independence Day

Christmas Day Boxing Day

January 2022

Mon	Tue	Wed	Thur	Fri	Sat	Sun
31					1	2
3	4	5	6	7	8	9
10	11	12	13	14	15	16
17	18	19	20	21	22	23
24	25	26	27	28	29	30

07

Filing - SDL return for November 2021

Payment - Withholding tax, PAYE, SDL for November 2021

20

Filing - VAT return for November 2021

Payment - VAT for November 2021

31

Filing - Excise Duty and WCF returns for November 2021

Payment - Excise Duty, NSSF/ PSSSF and WCF for November 2021, City Service Levy for October to December 2021

Filing - Income Tax (year end): June 2021 (final return), December 2021 (instalment tax amendment), September 2022 (instalment tax return)

Payment - Income Tax (year end) June 2021 (final tax), December 2021 (4th instalment), March 2022 (3rd instalment), June 2022 (2nd instalment), September 2022 (1st instalment)



Email: info@pwc.co.tz • Website: www.pwc.co.tz

Dar es Salaam

369 Toure Drive, Oysterbay • P O Box 45 Dar es Salaam, Tanzania
Tel: +255 22 219 2000 • Fax: +255 22 219 2200

Arusha

Fourth Floor, PPF Plaza Corridor Street • P O Box 3070 Arusha, Tanzania
Tel: +255 27 254 8881 • Fax: +255 27 250 8166



@PwC_tz



PwC Tanzania



PwC Africa

Our Photographers

January



Kelvin Abraham, Senior Associate - Africa Finance - Improvement and Change

Construction of flyovers is a focus area so as to help decongest Dar es Salaam. The recently opened Ubungu flyover, is a 266 metre long interchange, with three levels and service roads, and which connects three roads (Morogoro road, Sam Nujoma road and Mandela road). This hub is key as Morogoro road is the main access and exit point for Dar es Salaam for traffic from / to upcountry cities and neighbouring countries.

February



Jafari Mbaye, Manager - Tax Services

Since 2016 we have sponsored first timers to run the Kili marathon hoping to encourage our people to take a more holistic view of their wellness, maintain an open mind and try new things. And in this spirit we were proud to yet again have sponsored PwC employees to take part in the 2020 Kili marathon and run a half marathon for the first time - in total we had 42 employees running (some of whom are captured in this picture).

March



Willie Kimaro, Senior Associate - Assurance (on Secondment to PwC UK from PwC Tanzania)

In Africa the bumblebee (also known as humble bee) is only found north of the Sahara. One of the most social creatures in the animal kingdom, it will only sting if it feels threatened. In common with the honey bee, that we are familiar with in sub-Saharan Africa, it is an important pollinator of many plants and fruiting trees - and so a crucial part of our ecosystem. This picture taken in London (whilst on secondment) was triggered by my intrigue at the differences and similarities with the bees back home in Tanzania.

April



John Mlaponi, Senior Associate - Tax Services (on secondment to PwC Ghana from PwC Tanzania)

Legon Botanical Garden is an outdoor spot in Accra, where you can easily get lost in nature and with that refresh your mind. Such natural scenery reminded me of the beauty back home, for example the Magoroto forest, a tropical rain forest in the Eastern Usambara mountains in north-east Tanzania. In such natural scenery, while the climate does its magic to flourish the flora, the vista is just priceless. You will wonder how nature can be so beautiful by hiding so many mysteries.

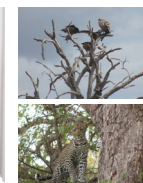
May



Agnes Koni, Associate - Tax Services (on secondment to PwC Kenya from PwC Tanzania)

Amidst partial lockdown, curfew, travel restrictions and cancellation of social events in Kenya due to the pandemic, a Saturday hike at Ngong Hills located along the Great Rift Valley within Kajiado County was indeed therapeutic. The tranquility of the forest, the hospitality of the locals (Maasai) and the fantastic view of the Great Rift Valley was all I signed up for. But I was also captivated by these wind turbines on the Ngong Hills Wind Farm - and reminded that in Tanzania we also have the prospect of development of one of the largest wind farms in Africa.

June



Rahma Ahmed, Associate - Assurance Services

This trip to Mikumi National Park was quite memorable for me because it was my first safari and so my first opportunity to see animals in their natural habitat. A real bonus was coming across a leopard, typically a very elusive animal. Taking pictures of these animals in trees conveyed different emotions; on the one hand, the alertness of the leopard reminded me of the energy that you can start a week with, whereas the picture of the monkey is a perfect reflection of how you can feel at the end of a busy week. Importantly these pictures are a reminder of the environmental importance of trees to sustaining life.



Email: info@pwc.co.tz • Website: www.pwc.co.tz

Dar es Salaam

369 Toure Drive, Oysterbay • P O Box 45 Dar es Salaam, Tanzania
Tel: +255 22 219 2000 • Fax: +255 22 219 2200

Arusha

Fourth Floor, PPF Plaza Corridor Street • P O Box 3070 Arusha, Tanzania
Tel: +255 27 254 8881 • Fax: +255 27 250 8166



@PwC_tz



PwC Tanzania



YouTube PwC Africa

Our Photographers

July



Stahamila Ulrich, Senior Associate - Tax Services (on secondment to PwC Ghana from PwC Tanzania)

Mount Afadjato (2,904 ft above sea level) is Ghana's highest mountain. Mountain hikes can be challenging and tedious but in the company of friends we celebrated each small milestone reached, cheering one another on - and this is the enduring memory, even more than the 20 minutes on the top enjoying the very beautiful view. Located close to the mountain are the Wli waterfalls, where the sound of the birds and water combining to form a relaxing natural symphony. Let's make it all count, the journey - the process - every day!

October



Nengilang'et Loviilo, Associate - Tax Services

"The water is a dark flower and a fisherman is a bee in the heart of her" — Annie Proulx. In the evenings, just as bees go in search of nectar so do fishermen go in search of fish. Sailing out in the open sea they come back with the goodies that the ocean holds. But no one goes out alone. The night may be dark, but joy comes in the morning. To me the fishermen are a great example to all of us of the value of teamwork and that our best potentials are unleashed when we work together.

August



Fadhila Tiisekwa, Senior Associate - Tax Services

Morningside is an old German colonial house about 10km from Morogoro town and high up the Uluguru mountains. Along the meandering path, you see small scale agriculture on the mountain slopes (including strawberry farming) and can stop by and have a swim at Choma Waterfalls – so spectacular during or just after the rainy season. Closer to the destination is an old church built by the Germans in the early 20th century – and so well preserved by the locals. Overall, what a therapeutic treat - the freshness, the beauty, the serene landscape, the kind locals, the clean water and air, the abundance. To quote Louis Armstrong "And I think to myself, What a wonderful world".

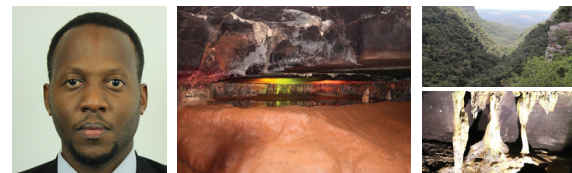
November



Ali Dawoodbhai, Associate Director - Tax Services

The aftermath of the Hindu festival of colour in Mauritius? Actually this is the seven coloured Earth, a geological formation in Chamarel (Mauritius). The red/anthracite and blue/purplish colours of the sands result from the decomposition of volcanic rock into clay and the resulting soil into two main elements, namely iron and aluminium respectively. The different shades of colour are believed to result from molten volcanic rock cooling down at different external temperatures and the rain carving the pattern. The second photo is of the Maconde rock view point, on the road between the Morne and the Bair du Cap, and taken on a busy coastal road at a very sharp hairpin bend (actually the rock was cut to allow the road to pass through!).

September

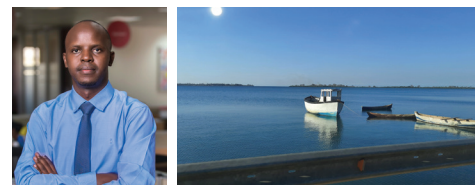


Enock Kweka, Manager - Tax Services (on secondment to PwC South Africa from PwC Tanzania)

In the wake of the amazing view of God's window, inside the oldest caves in the world, which were formed over 240 millions ago, Sudwala Caves, is where I posed the big question.

Indeed, that's a day neither she or I or even the people who witnessed it, would ever forget. To say the least, the might of nature is stunning and beautiful...

December



Joseph Temu, Associate - Assurance Services

I passed through Mikindani Bay en route to an audit assignment in Mtwara. The bay is situated along Mikindani, a historic town which was a centre of trade for the locals, Arabs, Portuguese and Germans since the 9th Century. The fortunes of the town as a trading centre started to decline in 1947 after the relocation of the local administration offices and port to Mtwara. Recent stakeholder efforts to revive different historical sites of the town, a notable one being the redevelopment of the "Old Boma" as a hotel, have increased tourist activities and created more vibrancy in the town.



Email: info@pwc.co.tz • Website: www.pwc.co.tz

Dar es Salaam

369 Toure Drive, Oysterbay • P O Box 45 Dar es Salaam, Tanzania
Tel: +255 22 219 2000 • Fax: +255 22 219 2200

Arusha

Fourth Floor, PPF Plaza Corridor Street • P O Box 3070 Arusha, Tanzania
Tel: +255 27 254 8881 • Fax: +255 27 250 8166



@PwC_tz



PwC Tanzania



PwC Africa

2022

January

Mon	Tue	Wed	Thur	Fri	Sat	Sun
31					1	2
3	4	5	6	7	8	9
10	11	12	13	14	15	16
17	18	19	20	21	22	23
24	25	26	27	28	29	30

February

Mon	Tue	Wed	Thur	Fri	Sat	Sun
	1	2	3	4	5	6
7	8	9	10	11	12	13
14	15	16	17	18	19	20
21	22	23	24	25	26	27
28						

March

Mon	Tue	Wed	Thur	Fri	Sat	Sun
	1	2	3	4	5	6
7	8	9	10	11	12	13
14	15	16	17	18	19	20
21	22	23	24	25	26	27
28	29	30	31			

April

Mon	Tue	Wed	Thur	Fri	Sat	Sun
					1	2
3	4	5	6	7	8	9
10	11	12	13	14	15	16
17	18	19	20	21	22	23
24	25	26	27	28	29	30

May

Mon	Tue	Wed	Thur	Fri	Sat	Sun
30	31					1
2	3	4	5	6	7	8
9	10	11	12	13	14	15
16	17	18	19	20	21	22
23	24	25	26	27	28	29

June

Mon	Tue	Wed	Thur	Fri	Sat	Sun
		1	2	3	4	5
6	7	8	9	10	11	12
13	14	15	16	17	18	19
20	21	22	23	24	25	26
27	28	29	30			

July

Mon	Tue	Wed	Thur	Fri	Sat	Sun
				1	2	3
4	5	6	7	8	9	10
11	12	13	14	15	16	17
18	19	20	21	22	23	24
25	26	27	28	29	30	31

August

Mon	Tue	Wed	Thur	Fri	Sat	Sun
1	2	3	4	5	6	7
8	9	10	11	12	13	14
15	16	17	18	19	20	21
22	23	24	25	26	27	28
29	30	31				

September

Mon	Tue	Wed	Thur	Fri	Sat	Sun
			1	2	3	4
5	6	7	8	9	10	11
12	13	14	15	16	17	18
19	20	21	22	23	24	25
26	27	28	29	30		

October

Mon	Tue	Wed	Thur	Fri	Sat	Sun
31					1	2
3	4	5	6	7	8	9
10	11	12	13	14	15	16
17	18	19	20	21	22	23
24	25	26	27	28	29	30

November

Mon	Tue	Wed	Thur	Fri	Sat	Sun
	1	2	3	4	5	6
7	8	9	10	11	12	13
14	15	16	17	18	19	20
21	22	23	24	25	26	27
28	29	30				

December

Mon	Tue	Wed	Thur	Fri	Sat	Sun
			1	2	3	4
5	6	7	8	9	10	11
12	13	14	15	16	17	18
19	20	21	22	23	24	25
26	27	28	29	30	31	



Email: info@pwc.co.tz • Website: www.pwc.co.tz

Dar es Salaam

369 Toure Drive, Oysterbay • P O Box 45 Dar es Salaam, Tanzania
Tel: +255 22 219 2000 • Fax: +255 22 219 2200

Arusha

Fourth Floor, PPF Plaza Corridor Street • P O Box 3070 Arusha, Tanzania
Tel: +255 27 254 8881 • Fax: +255 27 250 8166



@PwC_tz



PwC Tanzania



PwC Africa

www.pwc.co.tz

© 2021 PricewaterhouseCoopers Limited. All rights reserved. In this document, "PwC" refers to PricewaterhouseCoopers Limited which is a member firm of PricewaterhouseCoopers International Limited, each member firm of which is a separate legal entity.